



livioEdge^{AI}

Next-generation sound
never before possible



Redefining what a hearing aid can do

We've reinvented the hearing aid with Livio Edge AI, the world's first Healthable hearing aid with artificial intelligence and embedded sensors.

Livio Edge AI addresses the deep connection between hearing health and overall health, empowering you with life-changing features and sound quality that, until now, was never possible in a hearing aid.

Award-winning technology

Livio Edge AI is the next step in our continuous effort to give you the best hearing health solutions with the most advanced technologies.



livioEdge^{AI}



Give yourself an edge

With Livio Edge AI, the power of artificial intelligence is at your fingertips, giving you never-before-possible, next-generation sound performance in the most challenging listening environments.

Built-in Artificial Intelligence

Livio Edge AI gives you an edge over other hearing aids with powerful artificial intelligence in every device.

Game-changing Sound with Edge Mode

With just a tap, the AI technology helps improve speech audibility in the most difficult listening situations — including when people are wearing face masks or social distancing.

The Most Complete Line of Rechargeable Hearing Aids

The world's first 2.4 GHz custom-molded rechargeable hearing aids give you discreet, comfortable and convenient options.



livioEdge^{AI}

Livio Edge AI takes our industry-leading sound performance to new heights, providing you with instantaneous adjustments for the most challenging listening situations.

With a simple tap, the artificial intelligence inside the hearing aids scans the environment and makes changes on the spot to help you when you need it most, including making it easier to hear people who are wearing face masks.

Hear speech comfortably even in busy settings while unwanted noise is suppressed.

No buzzing, no whistling, just comfortable, feedback-free listening all day.

Get superior sound quality, clarity, more natural hearing and effortless transitions.

Stream crisp, clear phone calls and experience music the way it was meant to be heard.

Connect hearing aids via Bluetooth® with accessories and select smartphones.*

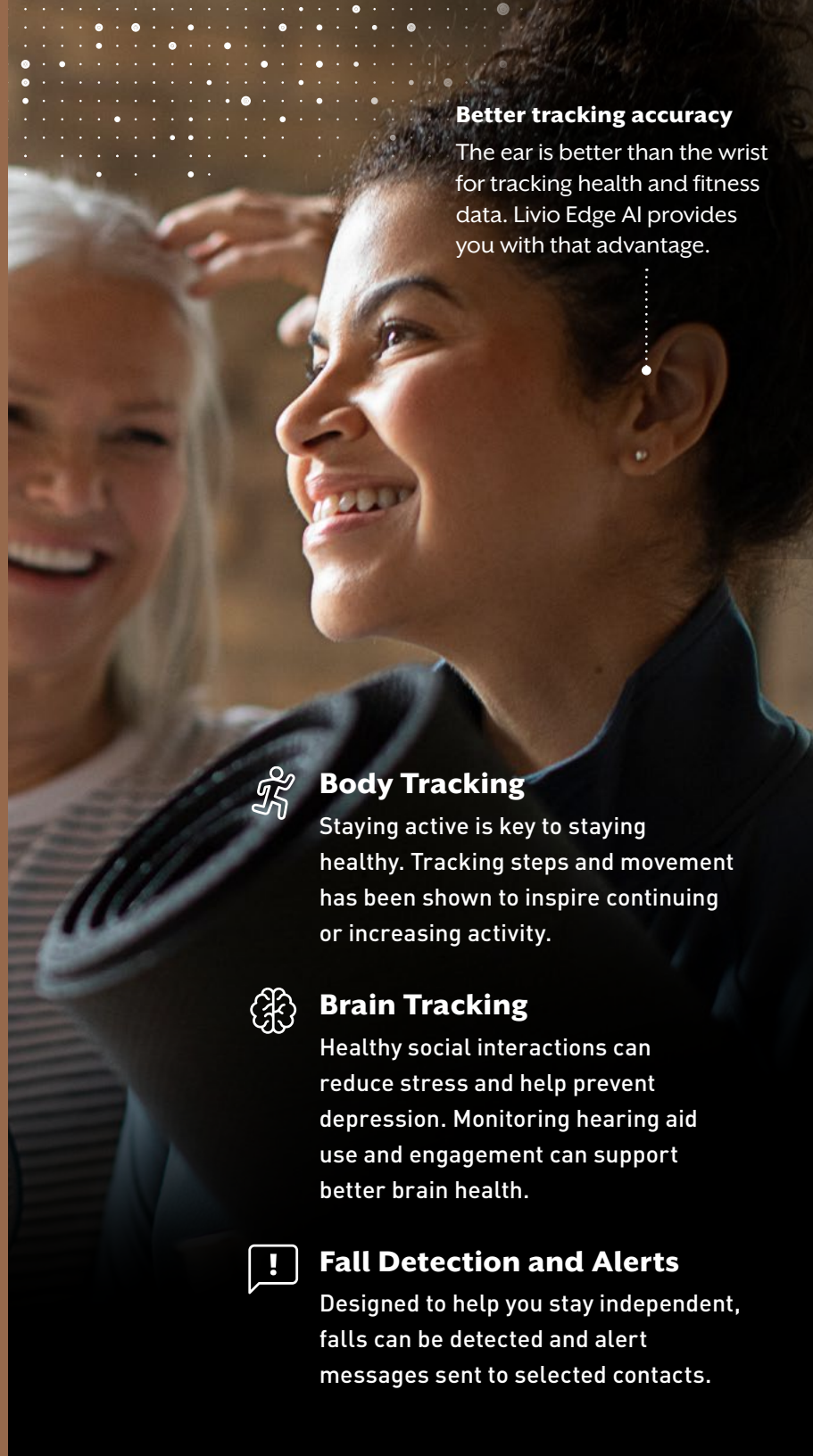


Preserve peace and quiet while important sounds like speech are amplified.

*Remote Microphone + is required for certain smartphones.

Healthy hearing means a healthier you

A growing body of evidence points to a connection between hearing health and overall health. People who treat their hearing loss not only hear better, but may lower their risk for serious health issues such as cognitive decline and dementia.¹



Better tracking accuracy

The ear is better than the wrist for tracking health and fitness data. Livio Edge AI provides you with that advantage.



Body Tracking

Staying active is key to staying healthy. Tracking steps and movement has been shown to inspire continuing or increasing activity.



Brain Tracking

Healthy social interactions can reduce stress and help prevent depression. Monitoring hearing aid use and engagement can support better brain health.



Fall Detection and Alerts

Designed to help you stay independent, falls can be detected and alert messages sent to selected contacts.

Two powerful apps that work together

thrive 

For you

Easy personalized control

The Thrive Hearing Control app works seamlessly with Livio Edge AI to give you complete control of your hearing aids. Change settings easily, quickly adjust volume, create customized memories and stream music or phone calls with the touch of a button.

And that's just the beginning

The Thrive Hearing Control app delivers many powerful features that are easy to use and will help you manage your health and access useful information.



thriveCare 

For the people who care about you

Maintain your independence

Thrive Care provides peace of mind to those you choose to share information with while helping you feel confident and independent.

With Thrive Care, you can share helpful information like your physical activity, hearing aid usage, and social engagement with pre-selected people. You decide what to share from your Thrive Hearing Control app—exclusive to Livio Edge AI hearing aids.



Simplify + thrive

No other hearing aid puts powerful, easy-to-use information features at your fingertips like Livio Edge AI.



Mask Mode

This custom memory boosts certain frequencies to help you better hear people who are wearing face masks.



Thrive Assistant

Use voice commands to get quick answers to questions, set reminders and control your hearing aids.



Live Sessions

Get adjustments from your hearing professional wherever you are via video chat.



Find My Phone

Using Thrive Assistant and your hearing aids, you can locate a lost or misplaced phone by having it ring.



Auto On/Off

Livio Edge AI detects when you put your hearing aids in and take them out saving battery life.



Translate

Instantly hear speech translated into your language right in your hearing aids.



Custom. Convenient. Comfortable.

Meet the world's first custom rechargeable hearing aids. Custom means the hearing aid is custom molded to fit your unique ear canal comfortably and securely. And they won't get tangled or pulled off when wearing or removing face masks. Multiple color options allow you to be discreet or show off your new in-ear device.



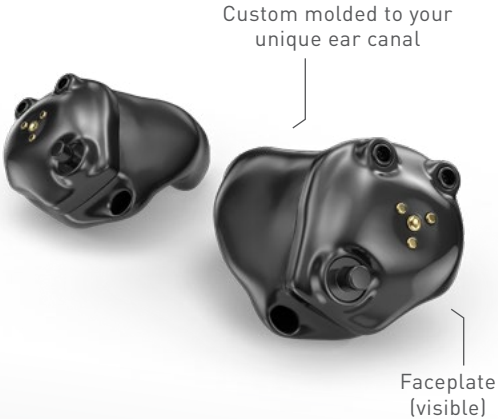
Our new charger fits all custom hearing aids and provides up to 24 hours of power in a single charge.




AI-powered hearing solutions for every need

Talk to your hearing professional about your budget, your lifestyle and how active you are to help find the hearing aid that's right for you. And if you have single-sided hearing loss we have solutions to help you.

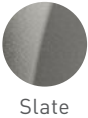
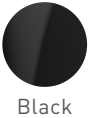
livioEdge^{AI}

In-ear Solutions

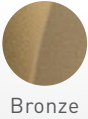
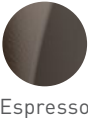


- 
Pink
- 
Light Brown
- 
Medium Brown
- 
Chestnut
- 
Dark Brown
- 
Black

Over-the-ear Solutions



Surface NanoShield helps protect hearing aids from moisture



Reconnect with what matters most

Sleek, wireless accessories stream the sounds you love directly to your Livio Edge AI hearing aids. Enjoy your favorite music, TV shows and phone calls with excellent sound quality.

1. Remote Microphone +

Enables easy audio streaming and one-on-one conversations in noisy environments.

2. Mini Remote Microphone

Enjoy one-on-one conversations in noisy environments by clipping it to your conversation partner's clothing.

3. TV Streamer

Easily stream audio from your TV or other electronic audio source directly to your hearing aids.

4. Remote

Easily control memory and volume, mute your hearing aids and turn other special features on and off.

5. Table Microphone

Make group settings easy with eight built-in microphones that stream the primary speaker's voice to your hearing aids.



The Starkey logo, Livio, Livio logo, Healthable, Thrive and Thrive logo are registered trademarks of Starkey Laboratories, Inc. Thrive Care and Thrive Care logo are trademarks of Starkey Laboratories, Inc.

Apple, the Apple logo, iPhone, iPad, iPod touch, App Store and Siri are trademarks of Apple, Inc., registered in the U.S. and other countries.

Google Play is a trademark of Google LLC.

The Bluetooth® word mark and logos are registered trademarks owned by Bluetooth SIG, Inc. and any use of such marks by Starkey is under license.

SOURCE

¹ Livingston, Gill., et al. (2020, August). Dementia prevention, intervention, and care: 2020 report of the Lancet Commission. *The Lancet*, 396(10248), 413–446. [https://doi.org/10.1016/50140-6736\(20\)30367-6](https://doi.org/10.1016/50140-6736(20)30367-6).

The app may have slight differences depending on your phone.



www.Starkey.com

Global Headquarters
6700 Washington Ave. S.
Eden Prairie, MN 55344
1.800.328.8602